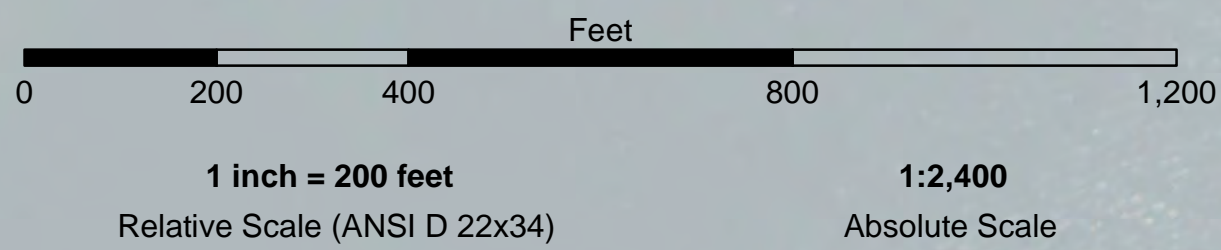


PRELIMINARY ISSUE
THIS PLAN ISSUED FOR
ADVANCE INFORMATION ONLY



Angle Point	Easting	Northing
01	5964034.06	2523317.15
02	5964016.64	2524016.94
03	5964112.28	2525555.38
04	5964100.94	2526002.91
05	5964291.44	2526320.08
06	5964510.68	2526417.97
07	5964640.82	2526387.82
08	5964896.75	2526428.80
09	5965340.91	2526683.00
10	5965486.85	2526813.90
11	5965568.98	2527049.75
12	5965533.54	2527080.90
13	5965656.54	2527207.90
14	5965741.54	2527102.90
15	5965817.15	2526809.28
16	5965658.54	2526720.90
17	5965589.54	2526594.90
18	5965354.54	2526471.90
19	5965075.79	2526287.40
20	5964548.87	2525702.48
21	5965208.23	2525530.41
22	5965004.97	2525845.23
23	5964811.88	2526142.53
24	5964530.87	2526207.95
25	5964430.39	2526163.01
26	5964302.32	2525949.44
27	5964312.18	2525550.74
28	5964336.54	2524024.90
29	5964353.96	2523325.11
C01	5964194.01	2523321.13
C02	5964176.59	2524020.92
C03	5964212.14	2525553.06
C04	5964201.63	2525976.17
C05	5964360.92	2526241.54
C06	5964520.76	2526312.91
C07	5964618.13	2526290.37
C08	5964854.32	2526285.71
C09	5964948.91	2526207.67
C10	5965351.62	2526304.45
C11	5964981.68	2526381.78
C12	5965473.68	2526652.44
C13	5965525.97	2526721.89
C14	5965541.25	2526811.61
C15	5965655.12	2527079.88
C16	5965590.20	2527144.80

Crescent City Entrance Light

FLOOD →
← EBB

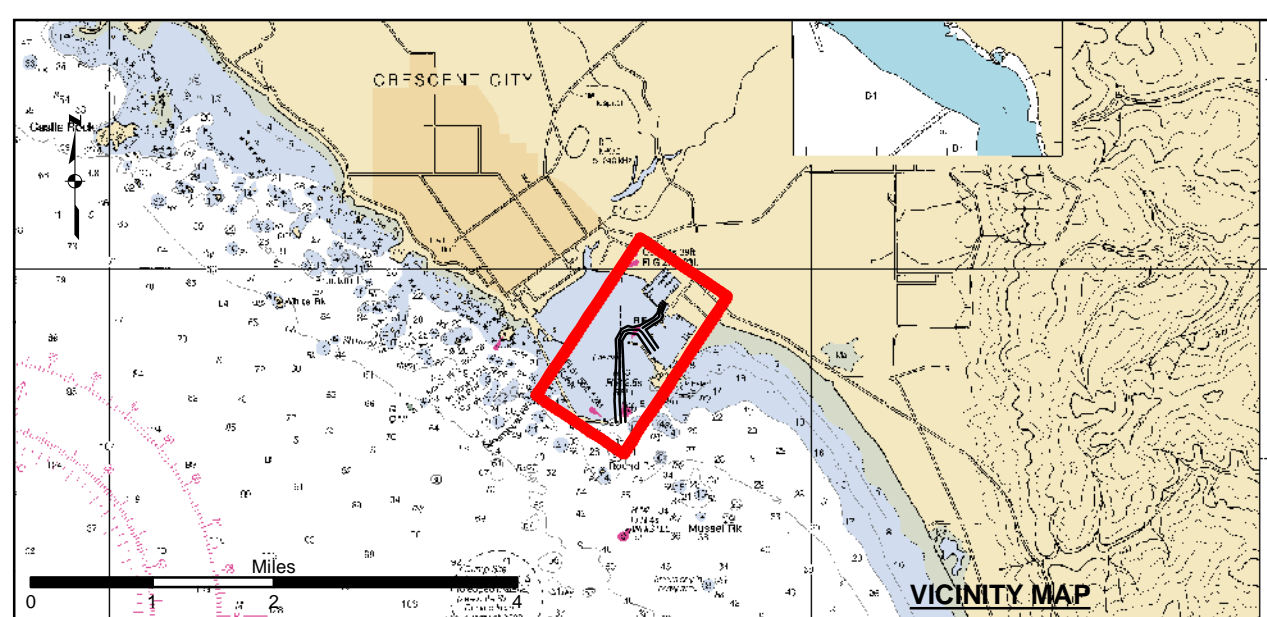
US Army Corps of Engineers
San Francisco District
450 Golden Gate Ave.
San Francisco, CA 94102

DISCLAIMER: The United States Government furnishes no express or implied warranty, representation, or guarantee of accuracy, completeness, or reliability of the data or information provided. The user is responsible for the results of any application of the data for other than its intended purpose. The recipient may not transfer these data to others without also transferring this disclaimer.

Prepared Under the Direction of TIMOTHY W. SHEBESTA LT Colonel, C.E., District Engineer	Chart Date: Jan 22, 2024
Submitted: Hydro Survey Team Leader	Designed by: PDT
Recommended: Chief, Hydro Survey Section	Checked by: PDT
Approved: Chief, Construction Branch	Drawn by: PDT

DEL Norte COUNTY
**CRESCENT CITY
CONDITION SURVEY**
16 JANUARY 2024

**Sheet
Reference
Number**
1 of 1



Federal Navigation Channel	Beacon, General	Contours
Shoaling Area	Obstruction Point	
Placement Area	Navigation Buoy	
Anchorage Area	Navigation Buoy	
Wreck Area	Shoalest Sounding*	
Submerged Wreck		-15
Angle Point		-14
		-13
		-12
		-11

NOTES:
HORIZONTAL COORDINATE SYSTEM: NORTH AMERICAN DATUM OF 1983 (NAD83), PROJECTED TO THE STATE PLANE COORDINATE SYSTEM (SPCS), CALIFORNIA ZONE II. DISTANCE UNITS IN U.S. SURVEY FEET.
VERTICAL DATUM: SOUNDINGS ARE SHOWN IN FEET AND INDICATE DEPTHS BELOW MEAN LOWER LOW WATER.
THE INFORMATION DEPICTED ON THIS MAP REPRESENTS THE RESULTS OF A SURVEY CONDUCTED ON THE DATE INDICATED AND CAN ONLY BE CONSIDERED TO REPRESENT THE GENERAL CONDITION EXISTING AT THAT TIME.
PLANE GRID, BEARING AND COORDINATES ARE BASED ON THE STATE OF CALIFORNIA COORDINATE SYSTEM, LAMBERT CONFORMAL PROJECTION, ZONE II NAD 83. CALIFORNIA, AS DESCRIBED IN SPECIAL PUBLICATION NO. 235, PUBLISHED BY NATIONAL OCEAN SURVEY. BASE MAPS ARE USDA NAIP 2010.
DRAWING NOT TO BE USED FOR NAVIGATION. ONLY CHANNEL CONDITION AT DATE OF SURVEY. THE LOCATION OF ALL NAVIGATION AIDS ARE BASED ON INFORMATION PROVIDED BY THE U.S. COAST GUARD. BUOY LOCATIONS REPRESENT THE POSITION OF THE SINKER ONLY.
SURVEYED BY GAHAGAN & BRYANT ASSOCIATES, INC.

SOUNDINGS ARE ACQUIRED BY FATHOMETER AND ARE SHOWN TO THE NEAREST TENTH OF A FOOT. VERTICAL AND HORIZONTAL CONTROL: USC&GS DISK BM TIDAL 20 1959 RESET 1060, LOCATED NEAR THE NORTH EAST CORNER OF CITIZEN DOCK. ELEV. 13.46' MLLW. (1983-2001 EPOCH); N 2526793.45, E 5966753.79.
HORIZONTAL POSITIONING OBTAINED USING LEICA 120 RTK SYSTEM.
SOUNDINGS ARE BASED ON THE DATUM OF MEAN LOWER LOW WATER AT THE LOCALITY, NAVD 88.
THE PROJECT DEPTH IS 20' FROM STA 0+00 TO 22+32; AND 15' FROM STA 22+32 TO 43+03.
Survey Control:
9419750, CRESCENT CITY
Published 4/21/2003 | Epoch 1983-2001
941 9750 TIDAL 20 RESET
PID: LV0110
OPUS November 2018
PPCP
941 9750 V TIDAL
PID: LV0563
OPUS October 2015